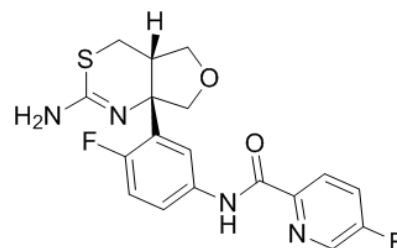


**Product Name** : LY2886721  
**Cat. No.** : PC-43420  
**CAS No.** : 1262036-50-9  
**Molecular Formula** : C<sub>18</sub>H<sub>16</sub>F<sub>2</sub>N<sub>4</sub>O<sub>2</sub>S  
**Molecular Weight** : 390.407  
**Target** : Beta-secretase (BACE)  
**Solubility** : DMSO: ≥ 42 mg/mL



## Biological Activity

LY2886721 (LY-2886721) is a highly potent, selective **BACE1** aspartyl protease inhibitor with IC<sub>50</sub> of 20.3 and 10.2 nM for BACE1 and BACE2, shows no inhibition against cathepsin D, pepsin, renin, or other aspartyl proteases.

LY2886721 produces a concentration-dependent decrease in A $\beta$ 1-40 and A $\beta$ 1-42 production in HEK293Swe cells (EC<sub>50</sub>s=10 nM).

LY2886721 demonstrates robust in vivo amyloid  $\beta$  lowering effect in nonclinical animal models, shows similar potent and persistent amyloid  $\beta$  lowering was observed in plasma and lumbar in clinical trials.

## References

Lahiri DK, et al. *Alzheimers Dement.* 2014 Oct;10(5 Suppl):S411-9.

May PC, et al. *J Neurosci.* 2015 Jan 21;35(3):1199-210.

Kumar D, et al. *Eur J Med Chem.* 2018 Mar 25;148:436-452.

**Caution: Product has not been fully validated for medical applications. Lab Use Only!**

E-mail: tech@probechem.com